



























## CM31: Connaitre la table d'addition +5

### Table d'addition de 5

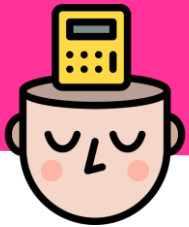
$0 + 5 = 5$	$5 + 0 = 5$
$1 + 5 = 6$	$5 + 1 = 6$
$2 + 5 = 7$	$5 + 2 = 7$
$3 + 5 = 8$	$5 + 3 = 8$
$4 + 5 = 9$	$5 + 4 = 9$
$5 + 5 = 10$	$5 + 5 = 10$



## CM31: Connaitre la table d'addition +5

### Table d'addition de 5

$0 + 5 = 5$	$5 + 0 = 5$
$1 + 5 = 6$	$5 + 1 = 6$
$2 + 5 = 7$	$5 + 2 = 7$
$3 + 5 = 8$	$5 + 3 = 8$
$4 + 5 = 9$	$5 + 4 = 9$
$5 + 5 = 10$	$5 + 5 = 10$
$6 + 5 = 11$	



## CM31: Connaitre la table d'addition +5

### Table d'addition de 5

$0 + 5 = 5$	$5 + 0 = 5$
$1 + 5 = 6$	$5 + 1 = 6$
$2 + 5 = 7$	$5 + 2 = 7$
$3 + 5 = 8$	$5 + 3 = 8$
$4 + 5 = 9$	$5 + 4 = 9$
$5 + 5 = 10$	$5 + 5 = 10$
$6 + 5 = 11$	$5 + 6 = 11$



## CM31: Connaitre la table d'addition +5

### Table d'addition de 5

$0 + 5 = 5$	$5 + 0 = 5$
$1 + 5 = 6$	$5 + 1 = 6$
$2 + 5 = 7$	$5 + 2 = 7$
$3 + 5 = 8$	$5 + 3 = 8$
$4 + 5 = 9$	$5 + 4 = 9$
$5 + 5 = 10$	$5 + 5 = 10$
$6 + 5 = 11$	$5 + 6 = 11$
$7 + 5 = 12$	

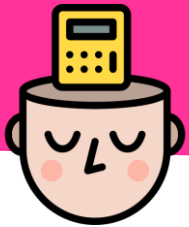


## CM31: Connaitre la table d'addition +5

### Table d'addition de 5

$0 + 5 = 5$	$5 + 0 = 5$
$1 + 5 = 6$	$5 + 1 = 6$
$2 + 5 = 7$	$5 + 2 = 7$
$3 + 5 = 8$	$5 + 3 = 8$
$4 + 5 = 9$	$5 + 4 = 9$
$5 + 5 = 10$	$5 + 5 = 10$
$6 + 5 = 11$	$5 + 6 = 11$
$7 + 5 = 12$	$5 + 7 = 12$

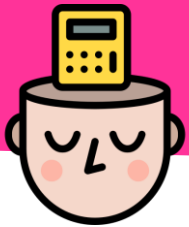




## CM31: Connaitre la table d'addition +5

### Table d'addition de 5

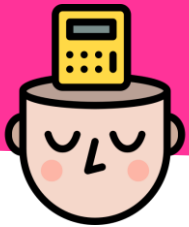
$0 + 5 = 5$	$5 + 0 = 5$
$1 + 5 = 6$	$5 + 1 = 6$
$2 + 5 = 7$	$5 + 2 = 7$
$3 + 5 = 8$	$5 + 3 = 8$
$4 + 5 = 9$	$5 + 4 = 9$
$5 + 5 = 10$	$5 + 5 = 10$
$6 + 5 = 11$	$5 + 6 = 11$
$7 + 5 = 12$	$5 + 7 = 12$
$8 + 5 = 13$	



## CM31: Connaitre la table d'addition +5

### Table d'addition de 5

$0 + 5 = 5$	$5 + 0 = 5$
$1 + 5 = 6$	$5 + 1 = 6$
$2 + 5 = 7$	$5 + 2 = 7$
$3 + 5 = 8$	$5 + 3 = 8$
$4 + 5 = 9$	$5 + 4 = 9$
$5 + 5 = 10$	$5 + 5 = 10$
$6 + 5 = 11$	$5 + 6 = 11$
$7 + 5 = 12$	$5 + 7 = 12$
$8 + 5 = 13$	$5 + 8 = 13$



## CM31: Connaitre la table d'addition +5

### Table d'addition de 5

$0 + 5 = 5$	$5 + 0 = 5$
$1 + 5 = 6$	$5 + 1 = 6$
$2 + 5 = 7$	$5 + 2 = 7$
$3 + 5 = 8$	$5 + 3 = 8$
$4 + 5 = 9$	$5 + 4 = 9$
$5 + 5 = 10$	$5 + 5 = 10$
$6 + 5 = 11$	$5 + 6 = 11$
$7 + 5 = 12$	$5 + 7 = 12$
$8 + 5 = 13$	$5 + 8 = 13$
$9 + 5 = 14$	



## CM31: Connaitre la table d'addition +5

### Table d'addition de 5

$0 + 5 = 5$	$5 + 0 = 5$
$1 + 5 = 6$	$5 + 1 = 6$
$2 + 5 = 7$	$5 + 2 = 7$
$3 + 5 = 8$	$5 + 3 = 8$
$4 + 5 = 9$	$5 + 4 = 9$
$5 + 5 = 10$	$5 + 5 = 10$
$6 + 5 = 11$	$5 + 6 = 11$
$7 + 5 = 12$	$5 + 7 = 12$
$8 + 5 = 13$	$5 + 8 = 13$
$9 + 5 = 14$	$5 + 9 = 14$



## CM31: Connaitre la table d'addition +5

### Table d'addition de 5

$0 + 5 = 5$	$5 + 0 = 5$
$1 + 5 = 6$	$5 + 1 = 6$
$2 + 5 = 7$	$5 + 2 = 7$
$3 + 5 = 8$	$5 + 3 = 8$
$4 + 5 = 9$	$5 + 4 = 9$
$5 + 5 = 10$	$5 + 5 = 10$
$6 + 5 = 11$	$5 + 6 = 11$
$7 + 5 = 12$	$5 + 7 = 12$
$8 + 5 = 13$	$5 + 8 = 13$
$9 + 5 = 14$	$5 + 9 = 14$
$10 + 5 = 15$	



## CM31: Connaitre la table d'addition +5

### Table d'addition de 5

$0 + 5 = 5$	$5 + 0 = 5$
$1 + 5 = 6$	$5 + 1 = 6$
$2 + 5 = 7$	$5 + 2 = 7$
$3 + 5 = 8$	$5 + 3 = 8$
$4 + 5 = 9$	$5 + 4 = 9$
$5 + 5 = 10$	$5 + 5 = 10$
$6 + 5 = 11$	$5 + 6 = 11$
$7 + 5 = 12$	$5 + 7 = 12$
$8 + 5 = 13$	$5 + 8 = 13$
$9 + 5 = 14$	$5 + 9 = 14$
$10 + 5 = 15$	$5 + 10 = 15$