



CM29: Additionner ou enlever 10

Combien font 35 et 10 ?

1	2	3	4	5	6	7	8	9	10
11	12	13	14	15	16	17	18	19	20
21	22	23	24	25	26	27	28	29	30
31	32	33	34	35	36	37	38	39	40
41	42	43	44	45	46	47	48	49	50
51	52	53	54	55	56	57	58	59	60
61	62	63	64	65	66	67	68	69	70
71	72	73	74	75	76	77	78	79	80
81	82	83	84	85	86	87	88	89	90
91	92	93	94	95	96	97	98	99	100



CM29: Additionner ou enlever 10

Combien font 35 et 10 ?

1	2	3	4	5	6	7	8	9	10
11	12	13	14	15	16	17	18	19	20
21	22	23	24	25	26	27	28	29	30
31	32	33	34	35	36	37	38	39	40
41	42	43	44	45	46	47	48	49	50
51	52	53	54	55	56	57	58	59	60
61	62	63	64	65	66	67	68	69	70
71	72	73	74	75	76	77	78	79	80
81	82	83	84	85	86	87	88	89	90
91	92	93	94	95	96	97	98	99	100



CM29: Additionner ou enlever 10

Combien font 35 et 10 ?

1	2	3	4	5	6	7	8	9	10
11	12	13	14	15	16	17	18	19	20
21	22	23	24	25	26	27	28	29	30
31	32	33	34	35	36	37	38	39	40
41	42	43	44	45	46	47	48	49	50
51	52	53	54	55	56	57	58	59	60
61	62	63	64	65	66	67	68	69	70
71	72	73	74	75	76	77	78	79	80
81	82	83	84	85	86	87	88	89	90
91	92	93	94	95	96	97	98	99	100



CM29: Additionner ou enlever 10

Combien font 35 et 10 ?

1	2	3	4	5	6	7	8	9	10
11	12	13	14	15	16	17	18	19	20
21	22	23	24	25	26	27	28	29	30
31	32	33	34	35	36	37	38	39	40
41	42	43	44	45	46	47	48	49	50
51	52	53	54	55	56	57	58	59	60
61	62	63	64	65	66	67	68	69	70
71	72	73	74	75	76	77	78	79	80
81	82	83	84	85	86	87	88	89	90
91	92	93	94	95	96	97	98	99	100



CM29: Additionner ou enlever 10

$$35 + 10 = 45$$

1	2	3	4	5	6	7	8	9	10
11	12	13	14	15	16	17	18	19	20
21	22	23	24	25	26	27	28	29	30
31	32	33	34	35	36	37	38	39	40
41	42	43	44	45	46	47	48	49	50
51	52	53	54	55	56	57	58	59	60
61	62	63	64	65	66	67	68	69	70
71	72	73	74	75	76	77	78	79	80
81	82	83	84	85	86	87	88	89	90
91	92	93	94	95	96	97	98	99	100



CM29: Additionner ou enlever 10

Combien font 46 et 10 ?

1	2	3	4	5	6	7	8	9	10
11	12	13	14	15	16	17	18	19	20
21	22	23	24	25	26	27	28	29	30
31	32	33	34	35	36	37	38	39	40
41	42	43	44	45	46	47	48	49	50
51	52	53	54	55	56	57	58	59	60
61	62	63	64	65	66	67	68	69	70
71	72	73	74	75	76	77	78	79	80
81	82	83	84	85	86	87	88	89	90
91	92	93	94	95	96	97	98	99	100



CM29: Additionner ou enlever 10

Combien font 46 et 10 ?

1	2	3	4	5	6	7	8	9	10
11	12	13	14	15	16	17	18	19	20
21	22	23	24	25	26	27	28	29	30
31	32	33	34	35	36	37	38	39	40
41	42	43	44	45	46	47	48	49	50
51	52	53	54	55	56	57	58	59	60
61	62	63	64	65	66	67	68	69	70
71	72	73	74	75	76	77	78	79	80
81	82	83	84	85	86	87	88	89	90
91	92	93	94	95	96	97	98	99	100



CM29: Additionner ou enlever 10

Combien font 46 et 10 ?

1	2	3	4	5	6	7	8	9	10
11	12	13	14	15	16	17	18	19	20
21	22	23	24	25	26	27	28	29	30
31	32	33	34	35	36	37	38	39	40
41	42	43	44	45	46	47	48	49	50
51	52	53	54	55	56	57	58	59	60
61	62	63	64	65	66	67	68	69	70
71	72	73	74	75	76	77	78	79	80
81	82	83	84	85	86	87	88	89	90
91	92	93	94	95	96	97	98	99	100

The table illustrates the addition of 10 to 46. A red box with the text "+10" is positioned between the numbers 45 and 54. A blue arrow points from the number 46 in the row above to the number 56 in the row below, demonstrating that adding 10 to 46 results in 56.



CM29: Additionner ou enlever 10

Combien font 46 et 10 ?

1	2	3	4	5	6	7	8	9	10
11	12	13	14	15	16	17	18	19	20
21	22	23	24	25	26	27	28	29	30
31	32	33	34	35	36	37	38	39	40
41	42	43	44	45	46	47	48	49	50
51	52	53	54	55	56	57	58	59	60
61	62	63	64	65	66	67	68	69	70
71	72	73	74	75	76	77	78	79	80
81	82	83	84	85	86	87	88	89	90
91	92	93	94	95	96	97	98	99	100

The table illustrates the addition of 10 to 46. The number 46 is highlighted in green, and the number 56 is highlighted in red. A red box containing "+10" is positioned between 46 and 56. Two blue arrows point from the 46 box to the 56 box, indicating the addition of 10.



CM29: Additionner ou enlever 10

$$46 + 10 = 56$$

1	2	3	4	5	6	7	8	9	10
11	12	13	14	15	16	17	18	19	20
21	22	23	24	25	26	27	28	29	30
31	32	33	34	35	36	37	38	39	40
41	42	43	44	45	46	47	48	49	50
51	52	53	54	55	56	57	58	59	60
61	62	63	64	65	66	67	68	69	70
71	72	73	74	75	76	77	78	79	80
81	82	83	84	85	86	87	88	89	90
91	92	93	94	95	96	97	98	99	100

The table illustrates the addition of 10 to 46. The number 46 is highlighted in green, and the number 56 is highlighted in red. A red box with the text "+10" is placed between the tens digits (4 and 5), with blue arrows pointing from 46 to 56, showing the shift of the tens place.



CM29: Additionner ou enlever 10

Combien font 75 et 10 ?

1	2	3	4	5	6	7	8	9	10
11	12	13	14	15	16	17	18	19	20
21	22	23	24	25	26	27	28	29	30
31	32	33	34	35	36	37	38	39	40
41	42	43	44	45	46	47	48	49	50
51	52	53	54	55	56	57	58	59	60
61	62	63	64	65	66	67	68	69	70
71	72	73	74	75	76	77	78	79	80
81	82	83	84	85	86	87	88	89	90
91	92	93	94	95	96	97	98	99	100



CM29: Additionner ou enlever 10

Combien font 75 et 10 ?

1	2	3	4	5	6	7	8	9	10
11	12	13	14	15	16	17	18	19	20
21	22	23	24	25	26	27	28	29	30
31	32	33	34	35	36	37	38	39	40
41	42	43	44	45	46	47	48	49	50
51	52	53	54	55	56	57	58	59	60
61	62	63	64	65	66	67	68	69	70
71	72	73	74	75	76	77	78	79	80
81	82	83	84	85	86	87	88	89	90
91	92	93	94	95	96	97	98	99	100



CM29: Additionner ou enlever 10

Combien font 75 et 10 ?

1	2	3	4	5	6	7	8	9	10
11	12	13	14	15	16	17	18	19	20
21	22	23	24	25	26	27	28	29	30
31	32	33	34	35	36	37	38	39	40
41	42	43	44	45	46	47	48	49	50
51	52	53	54	55	56	57	58	59	60
61	62	63	64	65	66	67	68	69	70
71	72	73	74	75	76	77	78	79	80
81	82	83	84	85	86	87	88	89	90
91	92	93	94	95	96	97	98	99	100

The number 75 is highlighted in green. A red box with the text "+10" is positioned between 74 and 84. Two blue arrows point from the red box to 75 and 85, illustrating the addition of 10 to 75.



CM29: Additionner ou enlever 10

Combien font 75 et 10 ?

1	2	3	4	5	6	7	8	9	10
11	12	13	14	15	16	17	18	19	20
21	22	23	24	25	26	27	28	29	30
31	32	33	34	35	36	37	38	39	40
41	42	43	44	45	46	47	48	49	50
51	52	53	54	55	56	57	58	59	60
61	62	63	64	65	66	67	68	69	70
71	72	73	74	75	76	77	78	79	80
81	82	83	84	85	86	87	88	89	90
91	92	93	94	95	96	97	98	99	100

The table illustrates the addition of 10 to 75. The number 75 is highlighted in green, and the number 85 is highlighted in red. A red box with the text "+10" is placed between the numbers 74 and 84. Two blue arrows point from the 75 cell to the 85 cell, one pointing down and one pointing right, indicating the addition of 10.



CM29: Additionner ou enlever 10

$$75 + 10 = 85$$

1	2	3	4	5	6	7	8	9	10
11	12	13	14	15	16	17	18	19	20
21	22	23	24	25	26	27	28	29	30
31	32	33	34	35	36	37	38	39	40
41	42	43	44	45	46	47	48	49	50
51	52	53	54	55	56	57	58	59	60
61	62	63	64	65	66	67	68	69	70
71	72	73	74	75	76	77	78	79	80
81	82	83	84	85	86	87	88	89	90
91	92	93	94	95	96	97	98	99	100

The table illustrates the addition of 10 to 75. The number 75 is highlighted in green, and the number 85 is highlighted in red. A red box with the text "+10" is placed between the columns for 74 and 84. Two blue arrows point from the 75 cell to the 85 cell, one pointing down and one pointing right, indicating the addition of 10.



CM29: Additionner ou enlever 10

Combien font 89 et 10 ?

1	2	3	4	5	6	7	8	9	10
11	12	13	14	15	16	17	18	19	20
21	22	23	24	25	26	27	28	29	30
31	32	33	34	35	36	37	38	39	40
41	42	43	44	45	46	47	48	49	50
51	52	53	54	55	56	57	58	59	60
61	62	63	64	65	66	67	68	69	70
71	72	73	74	75	76	77	78	79	80
81	82	83	84	85	86	87	88	89	90
91	92	93	94	95	96	97	98	99	100



CM29: Additionner ou enlever 10

Combien font 89 et 10 ?

1	2	3	4	5	6	7	8	9	10
11	12	13	14	15	16	17	18	19	20
21	22	23	24	25	26	27	28	29	30
31	32	33	34	35	36	37	38	39	40
41	42	43	44	45	46	47	48	49	50
51	52	53	54	55	56	57	58	59	60
61	62	63	64	65	66	67	68	69	70
71	72	73	74	75	76	77	78	79	80
81	82	83	84	85	86	87	88	89	90
91	92	93	94	95	96	97	98	99	100



CM29: Additionner ou enlever 10

Combien font 89 et 10 ?

1	2	3	4	5	6	7	8	9	10
11	12	13	14	15	16	17	18	19	20
21	22	23	24	25	26	27	28	29	30
31	32	33	34	35	36	37	38	39	40
41	42	43	44	45	46	47	48	49	50
51	52	53	54	55	56	57	58	59	60
61	62	63	64	65	66	67	68	69	70
71	72	73	74	75	76	77	78	79	80
81	82	83	84	85	86	87	88	89	90
91	92	93	94	95	96	97	98	99	100

The table illustrates the addition of 10 to 89. A red box with "+10" is placed over the number 87. A blue arrow points from 87 to 88, and another blue arrow points from 88 to 89, showing the step-by-step addition of 10 to reach 89.



CM29: Additionner ou enlever 10

Combien font 89 et 10 ?

1	2	3	4	5	6	7	8	9	10
11	12	13	14	15	16	17	18	19	20
21	22	23	24	25	26	27	28	29	30
31	32	33	34	35	36	37	38	39	40
41	42	43	44	45	46	47	48	49	50
51	52	53	54	55	56	57	58	59	60
61	62	63	64	65	66	67	68	69	70
71	72	73	74	75	76	77	78	79	80
81	82	83	84	85	86	87	88	89	90
91	92	93	94	95	96	97	98	99	100

The table illustrates the addition of 10 to 89. A red box with '+10' is placed over the number 87. A blue arrow points from 87 to 88, and another blue arrow points from 88 to 89. The cell containing 89 is highlighted in green, and the cell containing 99 is highlighted in red.



CM29: Additionner ou enlever 10

$$89 + 10 = 99$$

1	2	3	4	5	6	7	8	9	10
11	12	13	14	15	16	17	18	19	20
21	22	23	24	25	26	27	28	29	30
31	32	33	34	35	36	37	38	39	40
41	42	43	44	45	46	47	48	49	50
51	52	53	54	55	56	57	58	59	60
61	62	63	64	65	66	67	68	69	70
71	72	73	74	75	76	77	78	79	80
81	82	83	84	85	86	87	88	89	90
91	92	93	94	95	96	97	98	99	100

The table illustrates the addition of 10 to 89. A red box with "+10" is placed over the number 87. A blue arrow points from 87 to 88, and another blue arrow points from 88 to 89. The number 89 is highlighted in green, and the number 99 is highlighted in red, showing the result of the addition.



CM29: Additionner ou enlever 10

Combien font $36 - 10$?

1	2	3	4	5	6	7	8	9	10
11	12	13	14	15	16	17	18	19	20
21	22	23	24	25	26	27	28	29	30
31	32	33	34	35	36	37	38	39	40
41	42	43	44	45	46	47	48	49	50
51	52	53	54	55	56	57	58	59	60
61	62	63	64	65	66	67	68	69	70
71	72	73	74	75	76	77	78	79	80
81	82	83	84	85	86	87	88	89	90
91	92	93	94	95	96	97	98	99	100



CM29: Additionner ou enlever 10

Combien font $36 - 10$?

1	2	3	4	5	6	7	8	9	10
11	12	13	14	15	16	17	18	19	20
21	22	23	24	25	26	27	28	29	30
31	32	33	34	35	36	37	38	39	40
41	42	43	44	45	46	47	48	49	50
51	52	53	54	55	56	57	58	59	60
61	62	63	64	65	66	67	68	69	70
71	72	73	74	75	76	77	78	79	80
81	82	83	84	85	86	87	88	89	90
91	92	93	94	95	96	97	98	99	100



CM29: Additionner ou enlever 10

Combien font $36 - 10$?

1	2	3	4	5	6	7	8	9	10
11	12	13	14	15	16	17	18	19	20
21	22	23	24	25	26	27	28	29	30
31	32	33	34	35	36	37	38	39	40
41	42	43	44	45	46	47	48	49	50
51	52	53	54	55	56	57	58	59	60
61	62	63	64	65	66	67	68	69	70
71	72	73	74	75	76	77	78	79	80
81	82	83	84	85	86	87	88	89	90
91	92	93	94	95	96	97	98	99	100



CM29: Additionner ou enlever 10

Combien font $36 - 10$?

1	2	3	4	5	6	7	8	9	10
11	12	13	14	15	16	17	18	19	20
21	22	23	24	25	26	27	28	29	30
31	32	33	34	35	36	37	38	39	40
41	42	43	44	45	46	47	48	49	50
51	52	53	54	55	56	57	58	59	60
61	62	63	64	65	66	67	68	69	70
71	72	73	74	75	76	77	78	79	80
81	82	83	84	85	86	87	88	89	90
91	92	93	94	95	96	97	98	99	100



CM29: Additionner ou enlever 10

$$36 - 10 = 26$$

1	2	3	4	5	6	7	8	9	10
11	12	13	14	15	16	17	18	19	20
21	22	23	24	25	26	27	28	29	30
31	32	33	34	35	36	37	38	39	40
41	42	43	44	45	46	47	48	49	50
51	52	53	54	55	56	57	58	59	60
61	62	63	64	65	66	67	68	69	70
71	72	73	74	75	76	77	78	79	80
81	82	83	84	85	86	87	88	89	90
91	92	93	94	95	96	97	98	99	100



CM29: Additionner ou enlever 10

Combien font $64 - 10$?

1	2	3	4	5	6	7	8	9	10
11	12	13	14	15	16	17	18	19	20
21	22	23	24	25	26	27	28	29	30
31	32	33	34	35	36	37	38	39	40
41	42	43	44	45	46	47	48	49	50
51	52	53	54	55	56	57	58	59	60
61	62	63	64	65	66	67	68	69	70
71	72	73	74	75	76	77	78	79	80
81	82	83	84	85	86	87	88	89	90
91	92	93	94	95	96	97	98	99	100



CM29: Additionner ou enlever 10

Combien font $64 - 10$?

1	2	3	4	5	6	7	8	9	10
11	12	13	14	15	16	17	18	19	20
21	22	23	24	25	26	27	28	29	30
31	32	33	34	35	36	37	38	39	40
41	42	43	44	45	46	47	48	49	50
51	52	53	54	55	56	57	58	59	60
61	62	63	64	65	66	67	68	69	70
71	72	73	74	75	76	77	78	79	80
81	82	83	84	85	86	87	88	89	90
91	92	93	94	95	96	97	98	99	100



CM29: Additionner ou enlever 10

Combien font $64 - 10$?

1	2	3	4	5	6	7	8	9	10
11	12	13	14	15	16	17	18	19	20
21	22	23	24	25	26	27	28	29	30
31	32	33	34	35	36	37	38	39	40
41	42	43	44	45	46	47	48	49	50
51	52	53	54	55	56	57	58	59	60
61	62	63	64	65	66	67	68	69	70
71	72	73	74	75	76	77	78	79	80
81	82	83	84	85	86	87	88	89	90
91	92	93	94	95	96	97	98	99	100

The table illustrates the subtraction $64 - 10$. A red box with the text "- 10" is placed over the number 64. A blue arrow points from the 64 cell to the 54 cell, showing the result of the subtraction. The 64 cell is highlighted in green.



CM29: Additionner ou enlever 10

Combien font $64 - 10$?

1	2	3	4	5	6	7	8	9	10
11	12	13	14	15	16	17	18	19	20
21	22	23	24	25	26	27	28	29	30
31	32	33	34	35	36	37	38	39	40
41	42	43	44	45	46	47	48	49	50
51	52	53	54	55	56	57	58	59	60
61	62	63	64	65	66	67	68	69	70
71	72	73	74	75	76	77	78	79	80
81	82	83	84	85	86	87	88	89	90
91	92	93	94	95	96	97	98	99	100



CM29: Additionner ou enlever 10

$$64 - 10 = 54$$

1	2	3	4	5	6	7	8	9	10
11	12	13	14	15	16	17	18	19	20
21	22	23	24	25	26	27	28	29	30
31	32	33	34	35	36	37	38	39	40
41	42	43	44	45	46	47	48	49	50
51	52	53	54	55	56	57	58	59	60
61	62	63	64	65	66	67	68	69	70
71	72	73	74	75	76	77	78	79	80
81	82	83	84	85	86	87	88	89	90
91	92	93	94	95	96	97	98	99	100

The table illustrates the subtraction $64 - 10 = 54$. The number 64 is highlighted in green, and the number 54 is highlighted in red. A red box containing "- 10" is positioned between 53 and 54, with a blue arrow pointing from 64 to 54, indicating the subtraction of 10 from 64 to reach 54.



CM29: Additionner ou enlever 10

Combien font $78 - 10$?

1	2	3	4	5	6	7	8	9	10
11	12	13	14	15	16	17	18	19	20
21	22	23	24	25	26	27	28	29	30
31	32	33	34	35	36	37	38	39	40
41	42	43	44	45	46	47	48	49	50
51	52	53	54	55	56	57	58	59	60
61	62	63	64	65	66	67	68	69	70
71	72	73	74	75	76	77	78	79	80
81	82	83	84	85	86	87	88	89	90
91	92	93	94	95	96	97	98	99	100



CM29: Additionner ou enlever 10

Combien font $78 - 10$?

1	2	3	4	5	6	7	8	9	10
11	12	13	14	15	16	17	18	19	20
21	22	23	24	25	26	27	28	29	30
31	32	33	34	35	36	37	38	39	40
41	42	43	44	45	46	47	48	49	50
51	52	53	54	55	56	57	58	59	60
61	62	63	64	65	66	67	68	69	70
71	72	73	74	75	76	77	78	79	80
81	82	83	84	85	86	87	88	89	90
91	92	93	94	95	96	97	98	99	100



CM29: Additionner ou enlever 10

Combien font $78 - 10$?

1	2	3	4	5	6	7	8	9	10
11	12	13	14	15	16	17	18	19	20
21	22	23	24	25	26	27	28	29	30
31	32	33	34	35	36	37	38	39	40
41	42	43	44	45	46	47	48	49	50
51	52	53	54	55	56	57	58	59	60
61	62	63	64	65	66	67	68	69	70
71	72	73	74	75	76	77	78	79	80
81	82	83	84	85	86	87	88	89	90
91	92	93	94	95	96	97	98	99	100

The table illustrates the subtraction $78 - 10$. A red box with the text "- 10" is placed over the number 76. A blue arrow points from 76 to 68, and another blue arrow points from 78 to 68, showing that subtracting 10 from 78 results in 68.



CM29: Additionner ou enlever 10

Combien font $78 - 10$?

1	2	3	4	5	6	7	8	9	10
11	12	13	14	15	16	17	18	19	20
21	22	23	24	25	26	27	28	29	30
31	32	33	34	35	36	37	38	39	40
41	42	43	44	45	46	47	48	49	50
51	52	53	54	55	56	57	58	59	60
61	62	63	64	65	66	67	68	69	70
71	72	73	74	75	76	77	78	79	80
81	82	83	84	85	86	87	88	89	90
91	92	93	94	95	96	97	98	99	100

The table illustrates the subtraction $78 - 10$. A red box containing -10 is positioned over the number 76. A blue arrow points from 76 to 68, and another blue arrow points from 78 to 68, showing that subtracting 10 from 78 results in 68.



CM29: Additionner ou enlever 10

$$78 - 10 = 68$$

1	2	3	4	5	6	7	8	9	10
11	12	13	14	15	16	17	18	19	20
21	22	23	24	25	26	27	28	29	30
31	32	33	34	35	36	37	38	39	40
41	42	43	44	45	46	47	48	49	50
51	52	53	54	55	56	57	58	59	60
61	62	63	64	65	66	67	68	69	70
71	72	73	74	75	76	77	78	79	80
81	82	83	84	85	86	87	88	89	90
91	92	93	94	95	96	97	98	99	100

The table illustrates the subtraction $78 - 10 = 68$. A red box containing "-10" is positioned between the numbers 67 and 68 in the 7th row. A blue arrow points from the number 78 in the 7th row to the number 68 in the 6th row, showing the result of subtracting 10 from 78. The number 78 is highlighted in green, and the number 68 is highlighted in red.



CM29: Additionner ou enlever 10

Combien font $89 - 10$?

1	2	3	4	5	6	7	8	9	10
11	12	13	14	15	16	17	18	19	20
21	22	23	24	25	26	27	28	29	30
31	32	33	34	35	36	37	38	39	40
41	42	43	44	45	46	47	48	49	50
51	52	53	54	55	56	57	58	59	60
61	62	63	64	65	66	67	68	69	70
71	72	73	74	75	76	77	78	79	80
81	82	83	84	85	86	87	88	89	90
91	92	93	94	95	96	97	98	99	100



CM29: Additionner ou enlever 10

Combien font $89 - 10$?

1	2	3	4	5	6	7	8	9	10
11	12	13	14	15	16	17	18	19	20
21	22	23	24	25	26	27	28	29	30
31	32	33	34	35	36	37	38	39	40
41	42	43	44	45	46	47	48	49	50
51	52	53	54	55	56	57	58	59	60
61	62	63	64	65	66	67	68	69	70
71	72	73	74	75	76	77	78	79	80
81	82	83	84	85	86	87	88	89	90
91	92	93	94	95	96	97	98	99	100



CM29: Additionner ou enlever 10

Combien font $89 - 10$?

1	2	3	4	5	6	7	8	9	10
11	12	13	14	15	16	17	18	19	20
21	22	23	24	25	26	27	28	29	30
31	32	33	34	35	36	37	38	39	40
41	42	43	44	45	46	47	48	49	50
51	52	53	54	55	56	57	58	59	60
61	62	63	64	65	66	67	68	69	70
71	72	73	74	75	76	77	78	79	80
81	82	83	84	85	86	87	88	89	90
91	92	93	94	95	96	97	98	99	100

The table illustrates the subtraction $89 - 10$. A red box with the text "- 10" is placed over the number 87. A blue arrow points from the 87 box to the 79 box, indicating the result of the subtraction. The number 89 in the table is highlighted in green.



CM29: Additionner ou enlever 10

Combien font $89 - 10$?

1	2	3	4	5	6	7	8	9	10
11	12	13	14	15	16	17	18	19	20
21	22	23	24	25	26	27	28	29	30
31	32	33	34	35	36	37	38	39	40
41	42	43	44	45	46	47	48	49	50
51	52	53	54	55	56	57	58	59	60
61	62	63	64	65	66	67	68	69	70
71	72	73	74	75	76	77	78	79	80
81	82	83	84	85	86	87	88	89	90
91	92	93	94	95	96	97	98	99	100

The table illustrates the subtraction $89 - 10$. A red box containing "- 10" is positioned over the number 78. A blue arrow points from 78 to 79, and another blue arrow points from 89 to 79, indicating that subtracting 10 from 89 results in 79.



CM29: Additionner ou enlever 10

$$89 - 10 = 79$$

1	2	3	4	5	6	7	8	9	10
11	12	13	14	15	16	17	18	19	20
21	22	23	24	25	26	27	28	29	30
31	32	33	34	35	36	37	38	39	40
41	42	43	44	45	46	47	48	49	50
51	52	53	54	55	56	57	58	59	60
61	62	63	64	65	66	67	68	69	70
71	72	73	74	75	76	77	78	79	80
81	82	83	84	85	86	87	88	89	90
91	92	93	94	95	96	97	98	99	100

The table illustrates the subtraction $89 - 10 = 79$. A red box containing "- 10" is positioned between the cells for 77 and 78. A blue arrow points from the 79 cell in the row containing 71-80 to the 89 cell in the row containing 81-90. Another blue arrow points from the 89 cell to the 79 cell, indicating the result of subtracting 10 from 89.



CM29: Additionner ou enlever 10

$$54 + 10 =$$



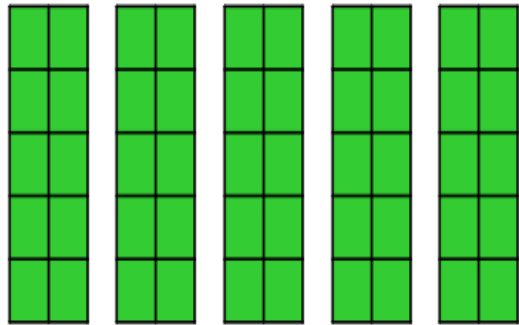
CM29: Additionner ou enlever 10

$$54 + 10 =$$



CM29: Additionner ou enlever 10

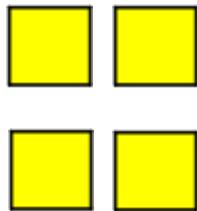
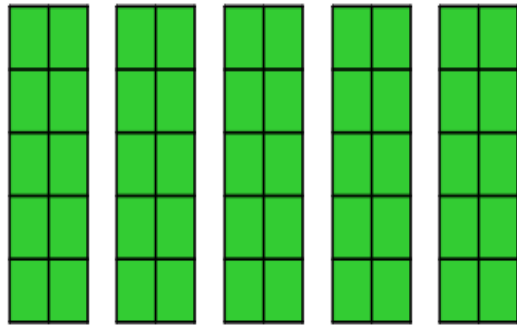
$$54 + 10 =$$

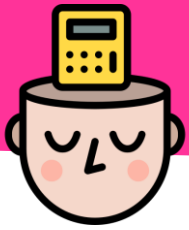




CM29: Additionner ou enlever 10

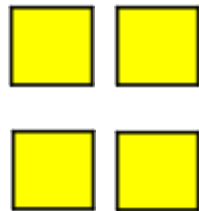
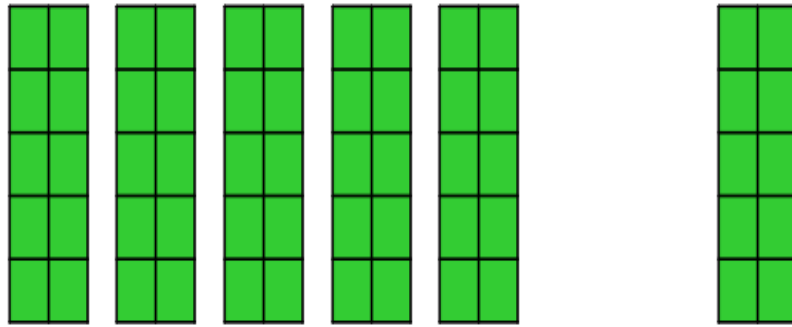
$$54 + 10 =$$

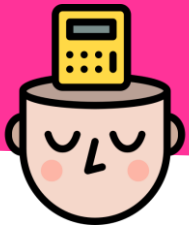




CM29: Additionner ou enlever 10

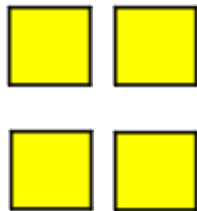
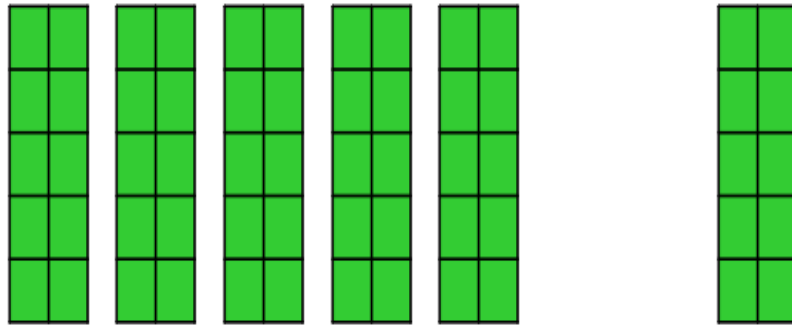
$$54 + 10 =$$





CM29: Additionner ou enlever 10

$$54 + 10 = 64$$





CM29: Additionner ou enlever 10

$$62 + 10 =$$



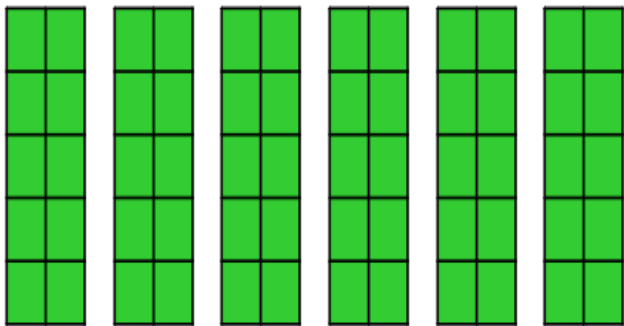
CM29: Additionner ou enlever 10

$$62 + 10 =$$



CM29: Additionner ou enlever 10

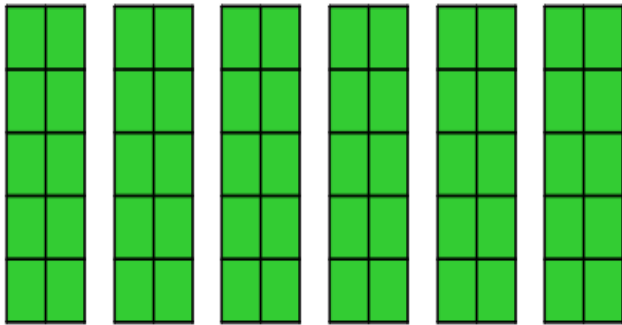
$$62 + 10 =$$





CM29: Additionner ou enlever 10

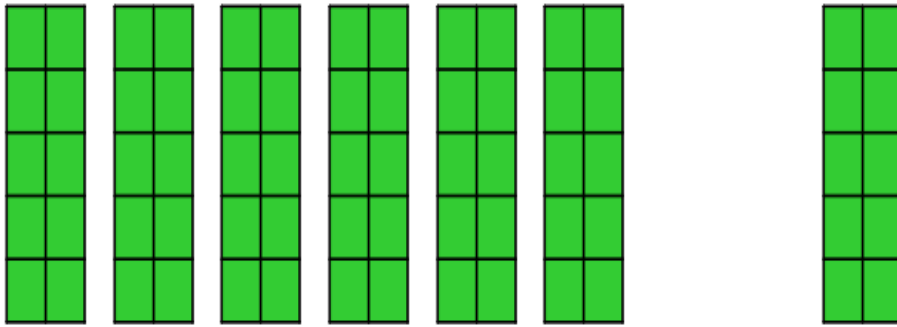
$$62 + 10 =$$





CM29: Additionner ou enlever 10

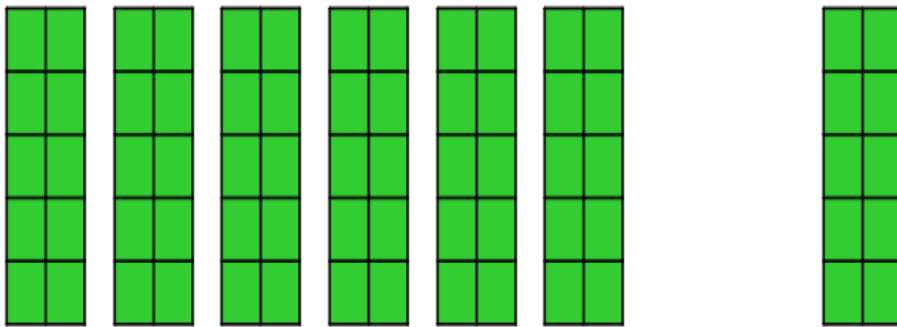
$$62 + 10 =$$





CM29: Additionner ou enlever 10

$$62 + 10 = 72$$





CM29: Additionner ou enlever 10

$$86 + 10 =$$



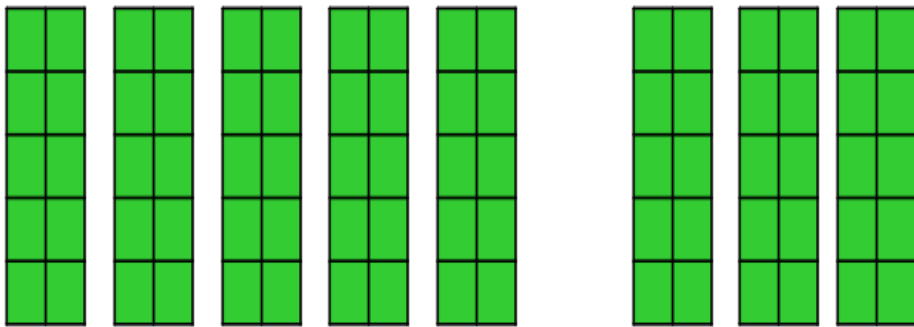
CM29: Additionner ou enlever 10

$$86 + 10 =$$



CM29: Additionner ou enlever 10

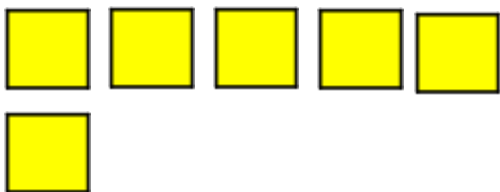
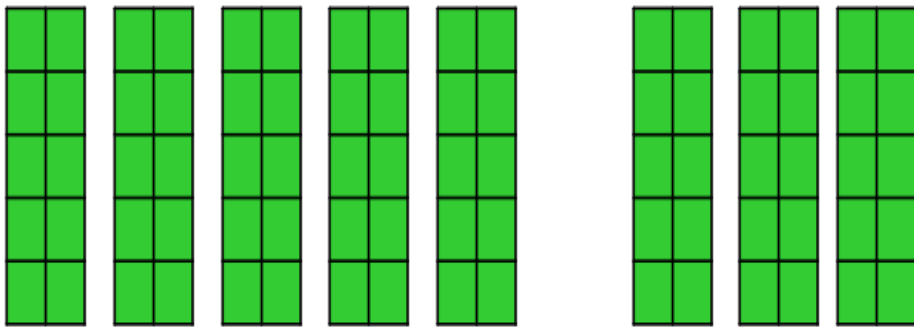
$$86 + 10 =$$

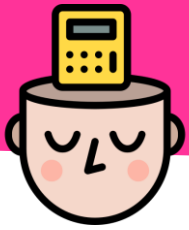




CM29: Additionner ou enlever 10

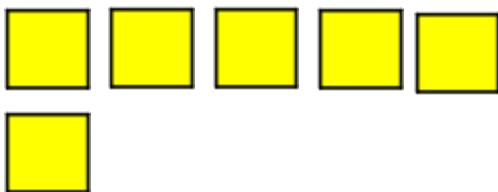
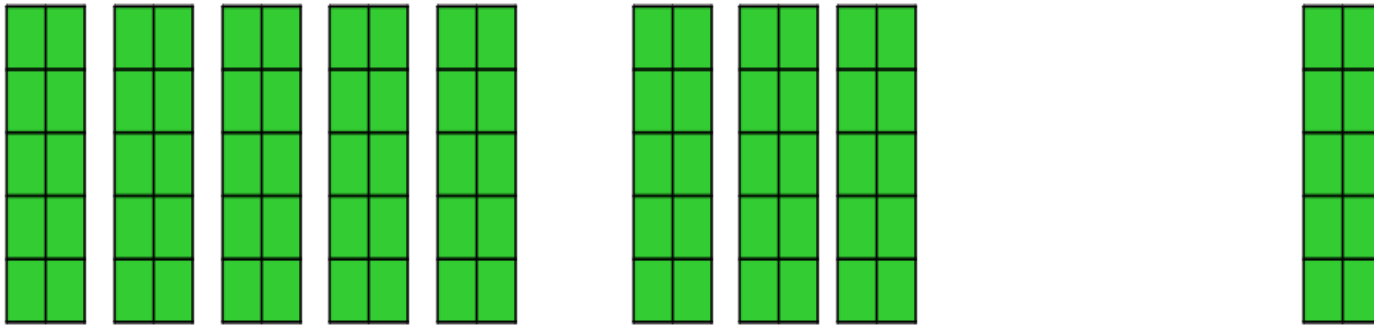
$$86 + 10 =$$





CM29: Additionner ou enlever 10

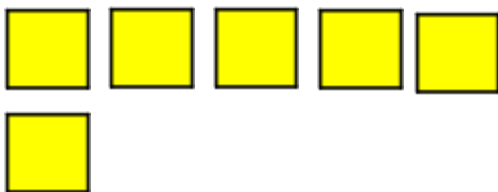
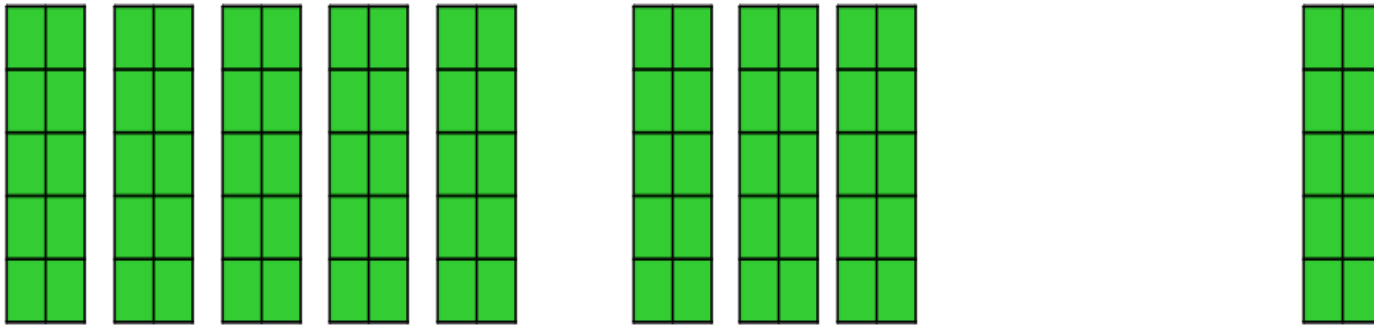
$$86 + 10 =$$





CM29: Additionner ou enlever 10

$$86 + 10 = 96$$





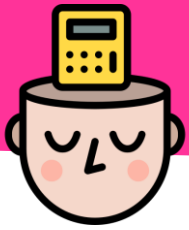
CM29: Additionner ou enlever 10

$$86 - 10 =$$



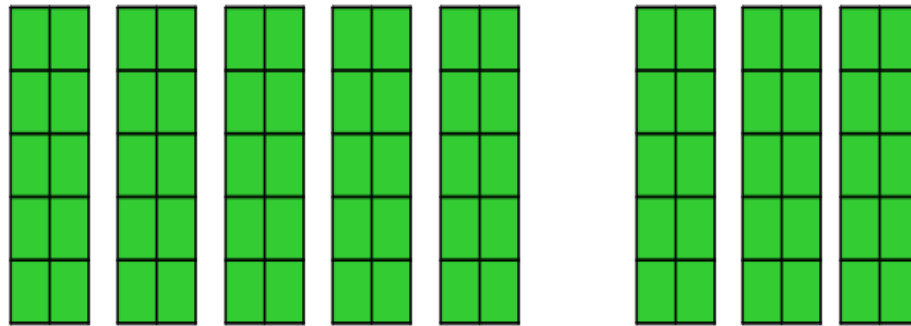
CM29: Additionner ou enlever 10

$$86 - 10 =$$



CM29: Additionner ou enlever 10

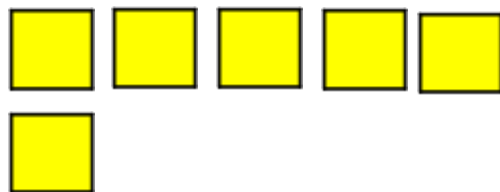
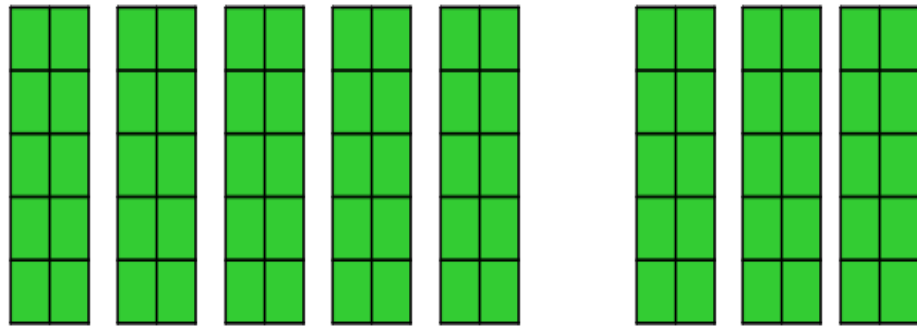
$$86 - 10 =$$





CM29: Additionner ou enlever 10

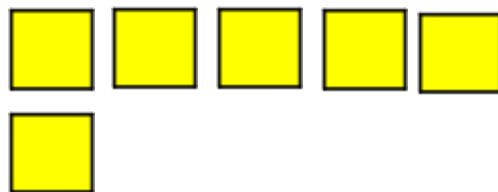
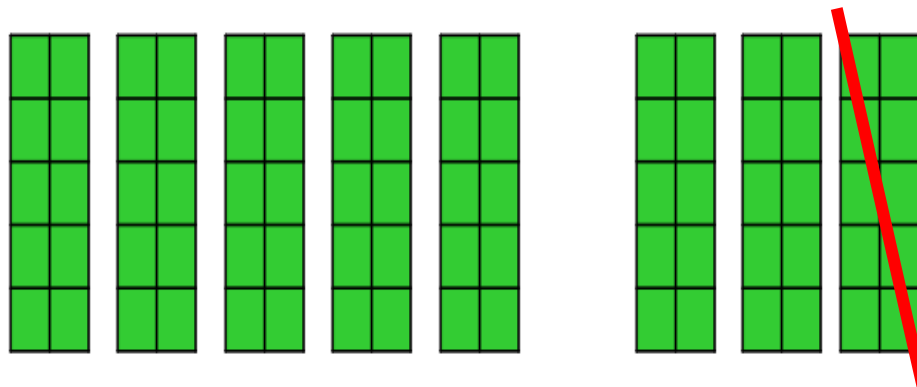
$$86 - 10 =$$

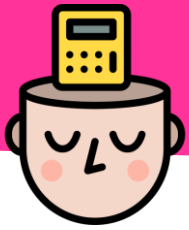




CM29: Additionner ou enlever 10

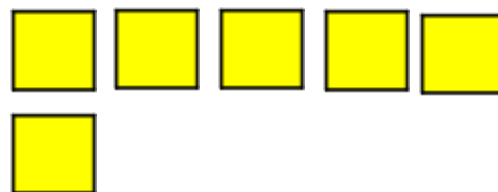
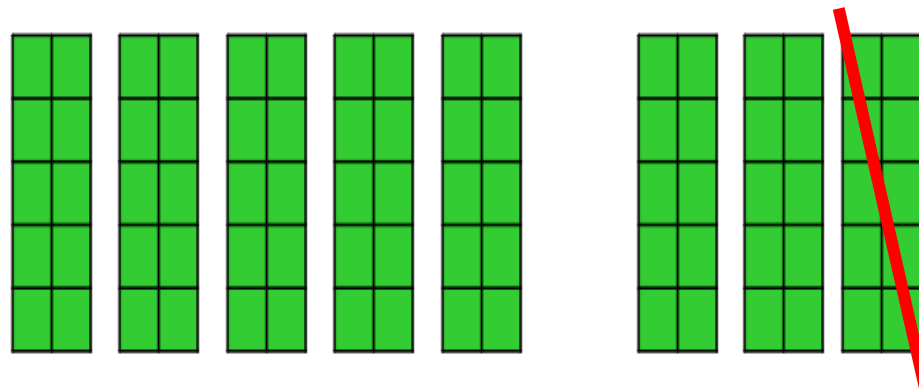
$$86 - 10 =$$





CM29: Additionner ou enlever 10

$$86 - 10 = 76$$





CM29: Additionner ou enlever 10

$$53 - 10 =$$



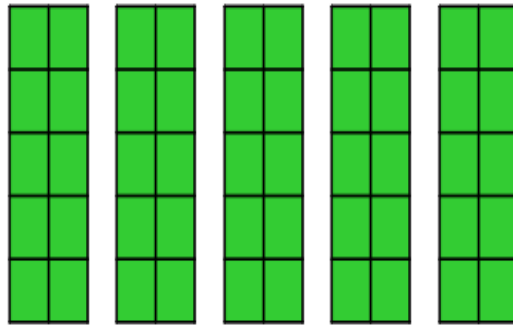
CM29: Additionner ou enlever 10

$$53 - 10 =$$



CM29: Additionner ou enlever 10

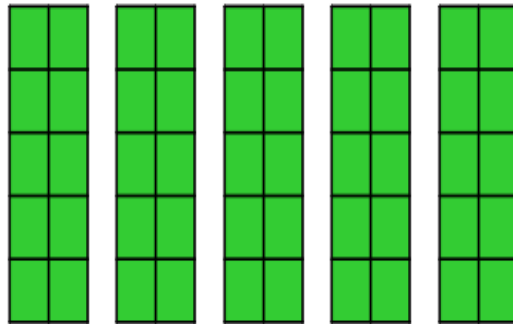
$$53 - 10 =$$

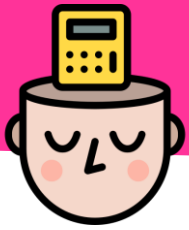




CM29: Additionner ou enlever 10

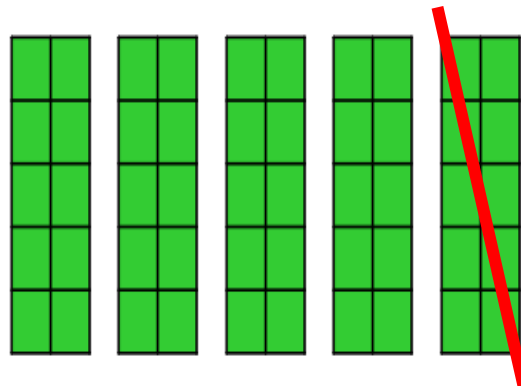
$$53 - 10 =$$

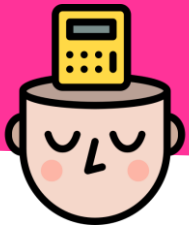




CM29: Additionner ou enlever 10

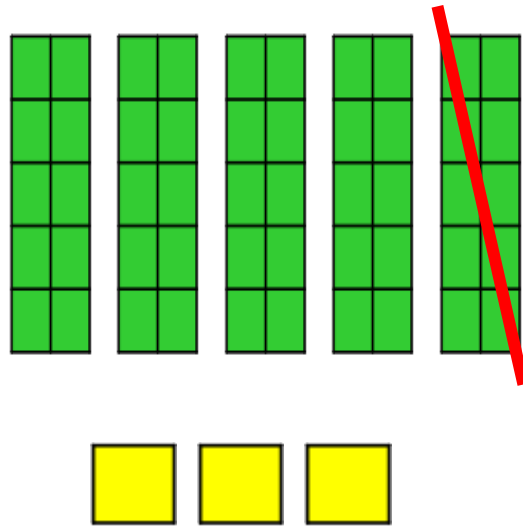
$$53 - 10 =$$





CM29: Additionner ou enlever 10

$$53 - 10 = 43$$





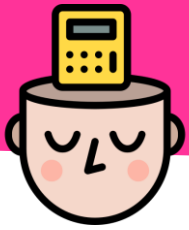
CM29: Additionner ou enlever 10

$$67 - 10 =$$



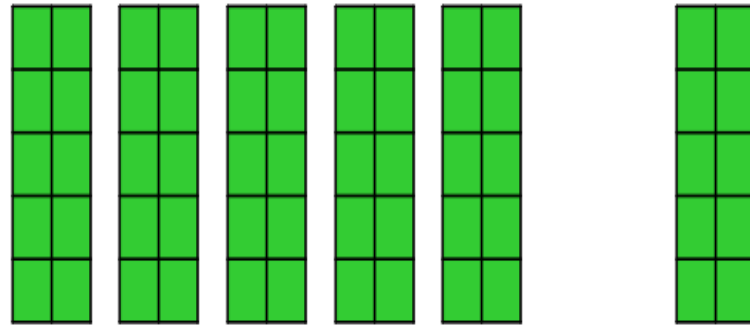
CM29: Additionner ou enlever 10

$$67 - 10 =$$



CM29: Additionner ou enlever 10

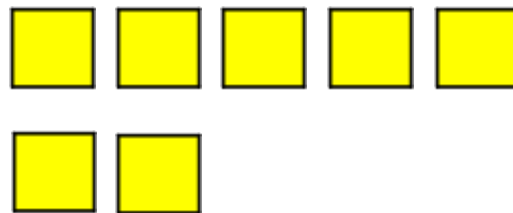
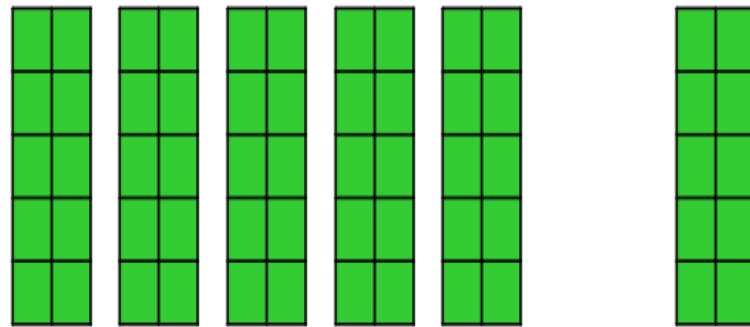
$$67 - 10 =$$





CM29: Additionner ou enlever 10

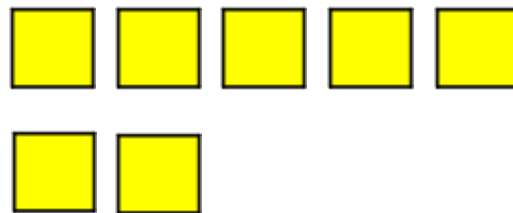
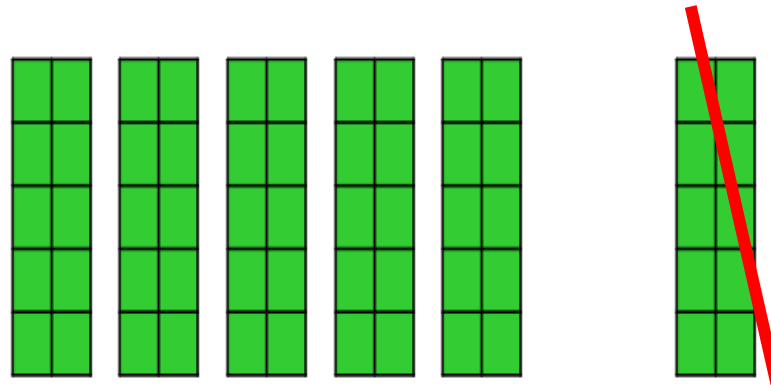
$$67 - 10 =$$





CM29: Additionner ou enlever 10

$$67 - 10 =$$





CM29: Additionner ou enlever 10

$$67 - 10 = 57$$

