

Son  
/gn/



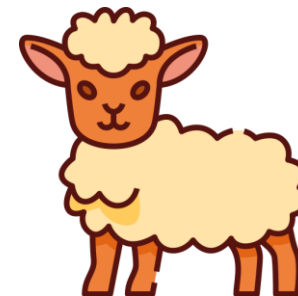
1

Son  
/gn/



2

Son  
/gn/



3

T - N - A - E - N - O  
- M - G

G - V - N - E - I

N - A - U - E - G - A

Son  
/gn/



4

Son  
/gn/



5

Son  
/gn/



6

C - Â - T - G - E - N  
- I - H - A

N - P - É - I - G  
- O - E

T - P - I - G -  
O - N - E

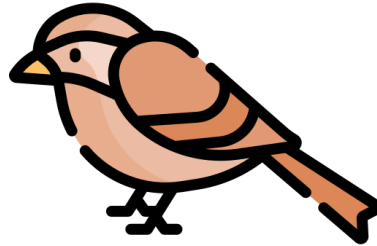
Son  
/gn/



7

N - B - I - G - R - A  
- I - O - E

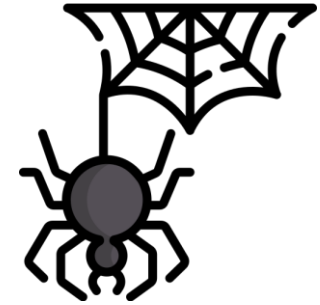
Son  
/gn/



8

L - R - O - I - S - N -  
G - S - O

Son  
/gn/



9

É - G - A - A - I - R -  
E - N

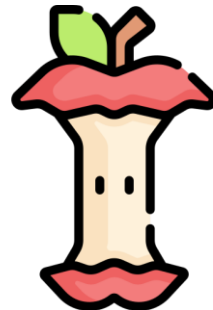
Son  
/gn/



10

C - N - P - A - E - G  
- M - A

Son  
/gn/



11

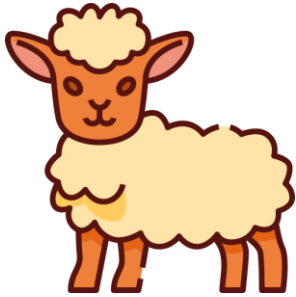
N - O - R - G -  
T - O - N

Son  
/gn/

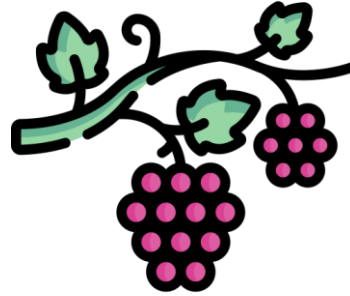


12

H - A - O - G - C - M  
- N - P - I - N



**AGNEAU**



**VIGNE**



**MONTAGNE**



**POIGNET**



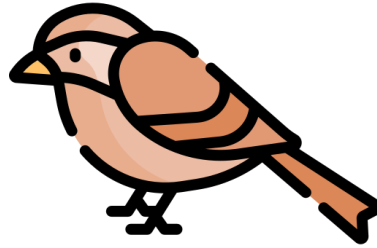
**POIGNÉE**



**CHÂTAIGNE**



**ARAIGNÉE**



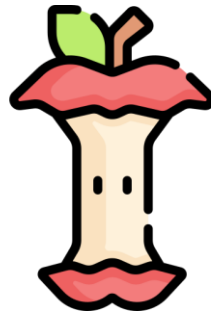
**ROSSIGNOL**



**BAIGNOIRE**



**CHAMPIGNON**



**TROGNON**



**CAMPAGNE**